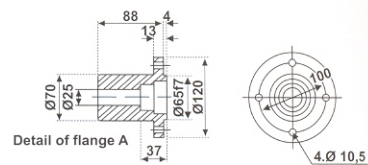
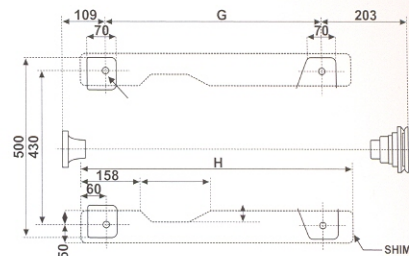
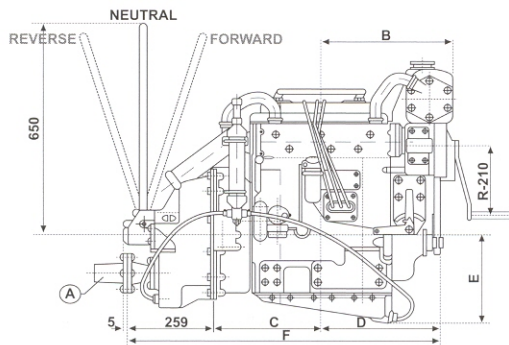
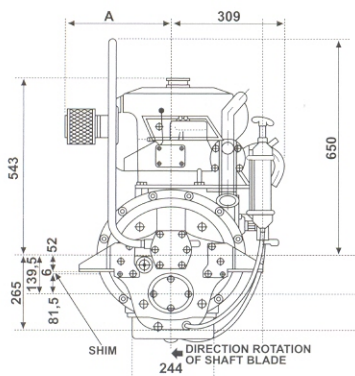


## Yanmar type BTD33MC

The Powerful Gem



Configuration:	4 stroke, vertical, water cooled diesel engine
Continuous output at crankshaft:	30 mhp (22.1 kW) @ 2600 rpm
Maximum output at crankshaft:	33 mhp (24.3 kW) @ 2600 rpm
Displacement:	1.717 L (105 cu in)
Bore and stroke:	90mm x 90mm (3.54 in x 3.54 in)
Cylinders:	3
Combustion system:	Direct injection
Aspiration:	Naturally aspirated
Starting system:	12 Volt electric with manual back up
Alternator:	12 Volt 35 Amp
Cooling system:	Fresh water heat exchanger
Cooling system capacity:	6.5 L (1.43 Imp gal)
Lubrication system:	Enclosed forced lubrication system
Lubrication system capacity:	9.0 L (1.98 Imp gal)
Marine transmission:	Yanmar MR33B (2.10:1)
Direction of rotation:	Clockwise (transmission output viewed from stern)
Dry weight (incl. transmission):	363 kg (800 lbs)
Mounting:	Mounting plates (included)
Fuel consumption:	185 g/mhp hr. (full load at rated rpm)
Manufacturer's Warranty:	1 year (refer warranty parchment)
Features:	<ul style="list-style-type: none"> <li>·Simple and robust construction</li> <li>·Ease of maintenance</li> <li>·Low operating costs</li> </ul>
Standard specifications:	<ul style="list-style-type: none"> <li>·Electric key start with hour meter and oil pressure alarm</li> <li>·Hand start back up with decompressor capability</li> <li>·12 Volt electrics, 35 Amp alternator</li> <li>·Half coupling</li> <li>·Sump pump (fitted)</li> <li>·Engine mounting plates</li> <li>·Yanmar MR33B marine transmission (fitted)</li> <li>·Transmission gear lever</li> </ul>
Options:	Shaft, tube and propeller kit to suit (see dimensions on reverse)



Dimensions Model	A	B	C	D	E	F	G	H	I	J	K
BTD22M	435	314,5	242	277	268	778	467	587	175	35	25
BTD33M	430	314	299	335	278	893	581	701	180	40	30

**DIMENSIONS:**

Propeller: (BT33MC.82761) - 18" x 12", Ø 1.1/2", 3 blades  
 Shaft Inox 304: 1.1/2" x 2,40m  
 Tube: 1.1/2" x 1m

**Oil Chart**

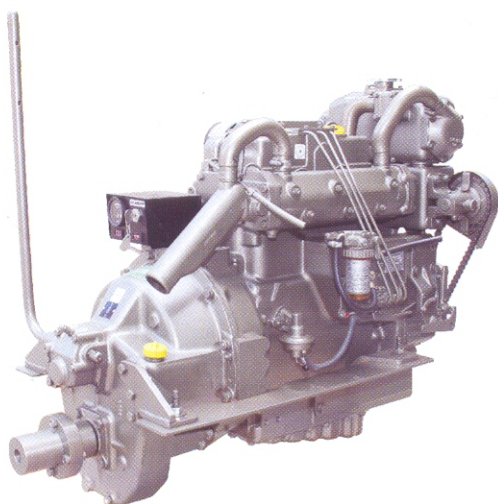
**L Series, TF, TNE/TNY**  
 Yanmar SAE 30/40 Mono

**BY Series**  
 Yanmar Synthetic SAE 5W-40

**GM, YM, JH, LH, LP, LY, LX, BY**  
 Yanmar SAE 30/40 Mono

**All Yanmar models**  
 Yanmar Coolant

**All commercial engines (Includes BTD series)**  
 Yanmar SAE 30/40 Mono



Notes: Fuel density at 15 degrees C = 0.842g/cm3  
 Text and illustrations not binding. Yanmar and Power Equipment reserves right to change without notification  
 Effective Date 01/2007

