

MARINE DIESEL ENGINES



**6HA2M-HTE H rating
204kW(278mhp)**

ALL-SPEED STABILITY!

Constant temp. cooling = constant performance.

The fresh water high temperature cooling also means you get non-fluctuating performance levels at all speeds, especially in low-load conditions. After starting, the ideal temperature for combustion is attained quickly and maintained by thermostatic control.

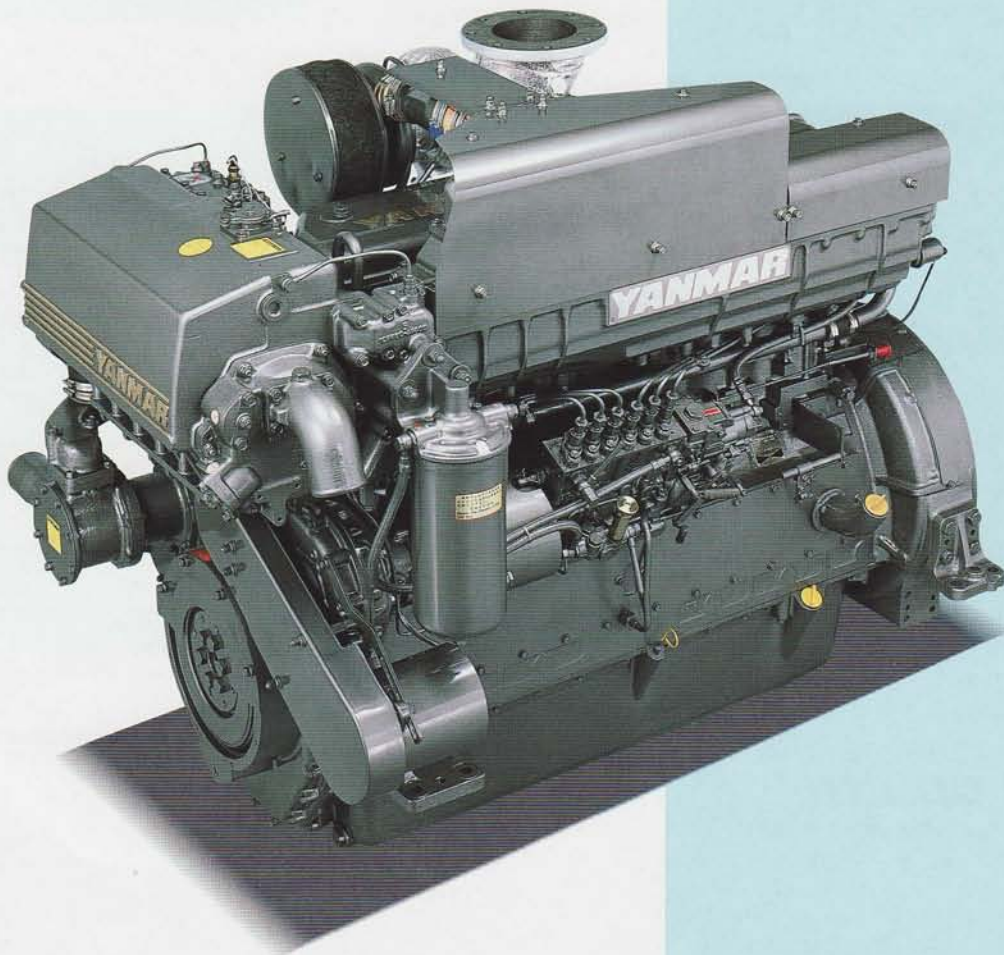
RELIABLE AND DURABLE!

Clean cooling = clear advantages.

Another tremendous advantage of this fresh water cooling system is that it reduces thermal wear and stress on cylinder liners and piston rings, prevents corrosion, reduces calcium deposits and makes valuable contributions to the reliability of the engine. Added to this efficient system is an internal oil jet cooling system acting on inner piston walls that reduces heat load at the circumference of the combustion chamber. One more way Yanmar increases durability.

Low vibration = less wear.

The minimal vibration of the engine has been achieved through the use of light-weight moving parts and precise balancing, making the machines more durable and less wear prone. Critical components such as stress bearing moving parts, valve trains and combustion chambers are made of special high grade metals that have proven to be most durable for high speed engines.



Photograph may show optional equipment.

ENGINE SPECIFICATIONS

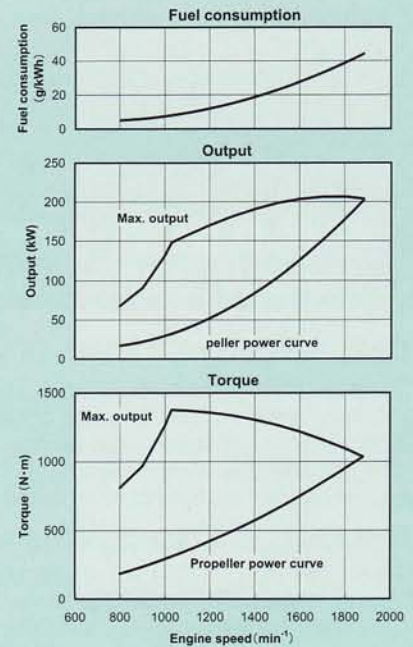
Model		6HA2M-HTE	
Type	4-cycle, vertical, turbo-charged diesel engine		
No. of cylinders	6 in-line		
Bore x stroke	mm(in.)	130×165(5.12×6.50)	
Displacement	lit.(cu.in.)	13.140(802)	
Rated output	kW(hp)/rpm	M:257(350)/1950	H:204(278)/1880
Fuel consumption	gr/kW.hr	M:214 (at rated output)	H:220 (at rated output)
Direction of rotation	Counterclockwise viewed from stern (crankshaft)		
Combustion system	Direct injection		
Cooling system	Fresh water cooling with sea water & fresh water pumps		
Lubricating system	Forced lubrication with gear pump		
Starting system	Electric starting motor (DC 24V)		
Dry weight	kg(lbs)	1340(2954)	

MARINE GEAR SPECIFICATIONS

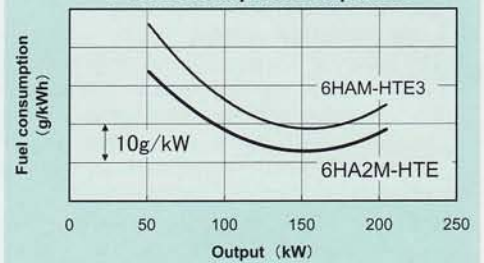
Engine model		6HA2M-HTE					
Marine gear model		YX-120			YX-120L		
Type	Hydraulic multi-disc clutch						
Reduction ratio		2.03	2.57	3.04	3.55	4.00	4.59
Prop. shaft speed at rated output	rpm	961	759	641	549	488	425
Direction of rotation	Clockwise or counterclockwise						
Dry weight	kg(lbs)	310(683)			385(848)		

6HA2M-HTE(H rating) Performance curves

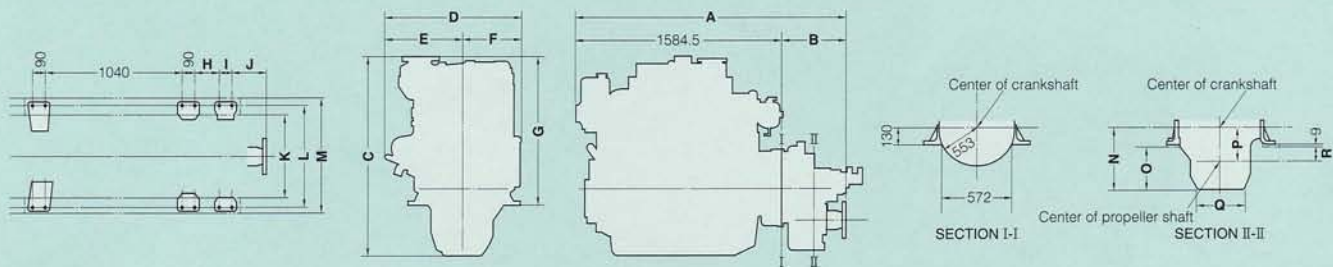
6HA2M-HTE(H rating) Performance curves



Fuel consumption comparison



DIMENSIONS



Model	A	B	C	D	E	F	G	H	I	J	K	L	M	N	O	P	Q	R
6HA2M-HTE	1584.5	—	1260	1016	499	517	874	—	—	—	570	700	750	386	247	—	—	—
6HA2M-HTE x YX-120	2004.5	420	1272	1016	499	517	874	134.5	120	187	581	700	781	398	259	208	317	69
6HA2M-HTE x YX-120L	2038.5	454	1384	1016	499	517	874	145.5	120	210	572	700	756	510	371	258	350	119

Note: All data subject to alteration without notice.

YANMAR CO., LTD.

1-32, Chayamachi, Kita-ku, Osaka 530-8311 JAPAN
<http://www.yanmar.co.jp>