

MARINE DIESEL ENGINES



2GMY
8.8kW(12mhp)

These fighting featherweights put savings on the line

Lightweight & Compact

Features outstanding compactness for the most effective use of engine room space through thoroughgoing efforts to reduce engine dimensions and weight. This high-speed, lightweight engine is faster as well.

Superb Fuel-Economy with Special Swirl Chamber

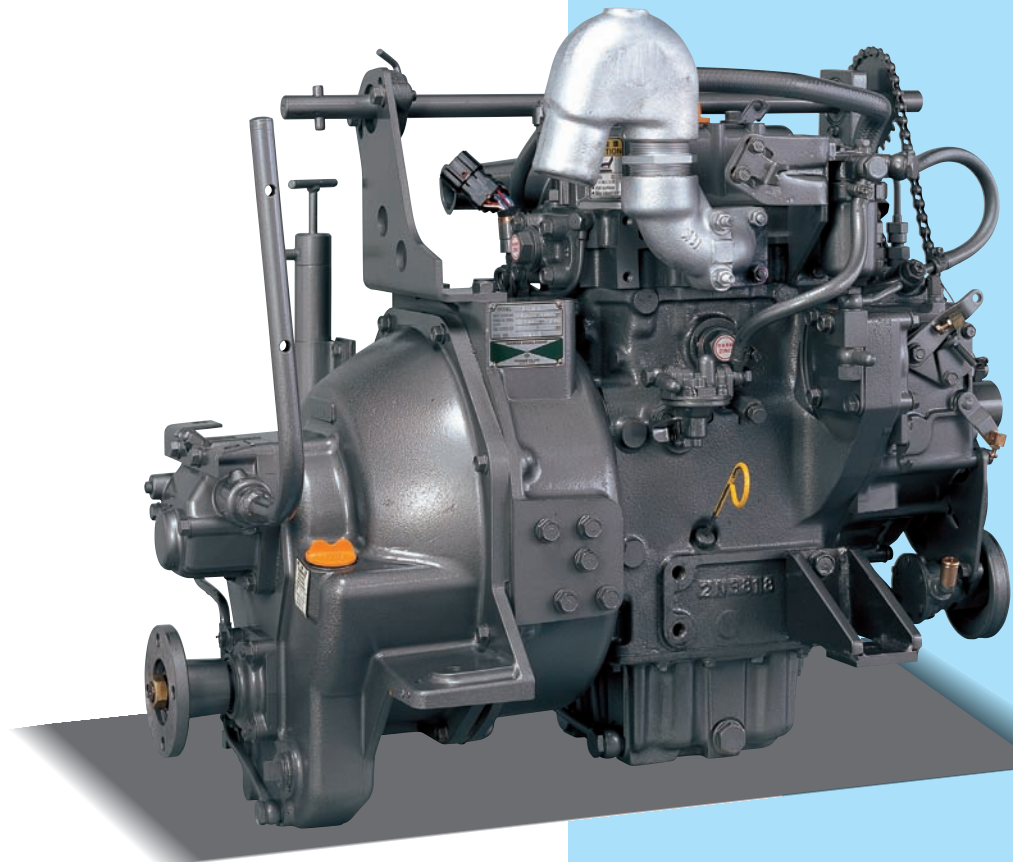
Yanmar's unique swirl pre-combustion chamber gives the better combustion for higher fuel economy.

Outstanding durability and Reliability

Durable with joint sea and fresh-water cooling to prevent the seawater from coming in direct contact with the engine. The constant fresh water cooling system also keeps the cooling water temperature at a constant level, so there is less wear of the cylinder liners, rings and other parts .

Low Vibrations and Low Noise

The intake and exhaust noise are effectively reduced by the intake silencer and water-cooled manifold. Vibrations caused by reciprocation are also minimised by comprehensive weight reduction and balance adjustment.

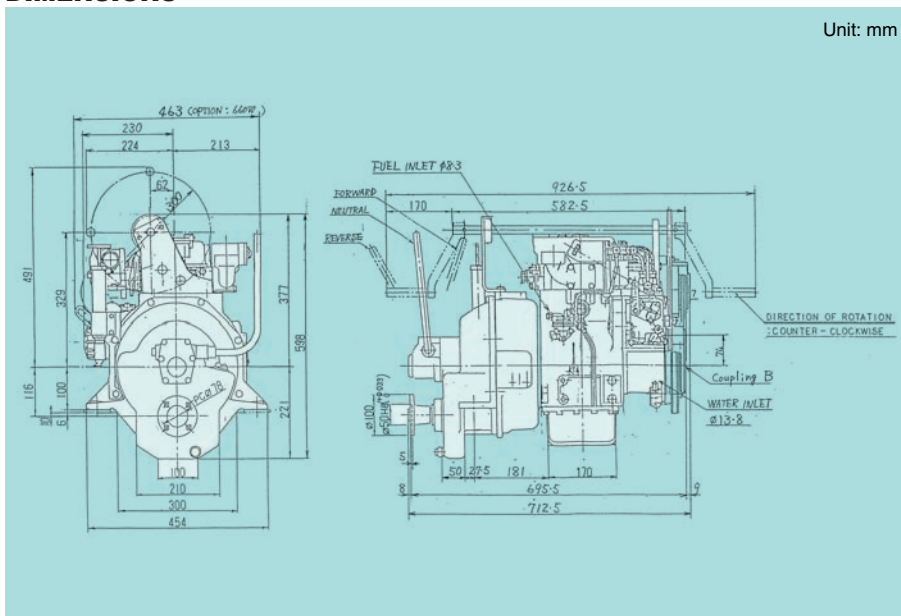


Photograph may show optional equipment.

SPECIFICATIONS

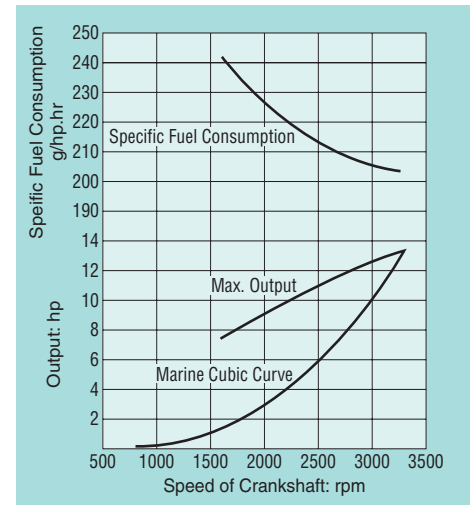
Model		2GM-Y	
Type		4-cycle, vertical, diesel engine	
Number of cylinders		2	
Bore x stroke		mm(in) 72 x 72(2.83 x 2.83)	
Displacement		lit.(cu.in) 0.586(35.75)	
Rated output kW(hp)/rpm	M	8.8(12.0)/3200	
	L	9.7(13.2)/3300	
Direction of rotation	Crank shaft	Counterclockwise viewed from stern	
	Prop. shaft	Clockwise viewed from stern	
Compression ratio		23.01	
Combustion system		Special swirl precombustion chamber	
Cooling system		Indirect cooling system	
Lubricating system		Forced lubrication with trochoid pump	
Starting system		Electric motor	
Model		Y-5M	
Type		Mechanical type	
Marine gear	Reduction ratio (forward)	2.10	3.04
	Propeller shaft speed	rpm 1524	1051
Dry weight		kg(lbs) 155(300)	

DIMENSIONS



Unit: mm

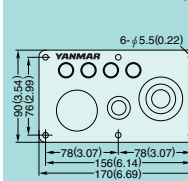
PERFORMANCE CURVES



INSTRUMENT PANEL CONTAINS FOLLOWING ITEMS (STANDARD)

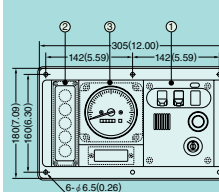
Detail of instrument panel A-type

Unit: mm



- Key switch
- Push button switch for starting
- Alarm buzzer (C.W. high temp. L.O. low pressure)
- Alarm lamps (Battery not charging, C.W. high temp., L.O. low pressure)

Detail of instrument panel B-type



① Switch unit

- Alarm buzzer stop switch
- Illumination switch

- Alarm buzzer
- Starter switch
- ② Alarm lamp unit
 - Battery not charging
 - C.W. high temp.
 - L.O. low pressure
 - C.W. level
 - L.O. filter clogged
 - Clutch oil pressure

③ Tachometer unit

- Tachometer with hour meter

ACCESSORIES

●: Standard △: Optional

Item	Name of accessories	Remark
Fuel oil	Fuel tank	△ 30lit.
	Fuel oil filter	● Paper element
	Water separator	△
	Fuel oil pump	●
	Fuel oil pipe	● Rubber 4m x 1
Lubrication oil	Evacuation pump	● Cylinder type
	Drain pipe (for engine, marine gear)	●
	Lubrication oil pressure switch	●
	Lubrication oil filter	● Paper element
Cooling	Sea water pump	● Rubber impeller
	Fresh water pump	●
	Heat exchanger	●
	Sub tank for fresh water	●
	Thermostat (for fresh water)	●
	Kingston cock with C.W. hose & strainer	● Rubber 2m x 2
	Sea water filter	△
Bilge	Bilge pump with hose & strainer	●
	Intake silencer	●
Air intake & Exhaust	Exhaust manifold (water cooled)	●
	Exhaust bend	●

Item	Name of accessories	Remark
Air intake & Exhaust	Mix. elbow (U-type)	△
	Exhaust silencer	△ 40A
	Exhaust pipe	● 40A x 1000mm
Starting	Starting motor	●
	Charging alternator	● 12V-35A
Instrument panel	Instrument panel (A-type)	●
	Instrument panel (B-type)	△
	Battery switch	●
	Extension wire	● 3m
Control device	Engine regulating lever with borden wire 1.5m	△
	Engine stop wire	●
Installation	Half coupling (Straight, w/φ16bottom hole)	●
	Mounting plate & shim	●
	Foundation bolt	●
Others	Tool	●
	Special tool	△
	Spare parts	△
	Operation manual	●
	Packing kit	△

Note: All data subject to alteration without notice.

YANMAR CO., LTD.

1-32, Chayamachi, Kita-ku, Osaka 530-8311 JAPAN
 Telephone: 06-6489-8063 Facsimile: 06-6489-1082
 http://www.yanmar.co.jp